



EXPERIENCE THE DIFFERENCE

PanoramaSky

LARGE-DIMENSIONED SLIDING DOOR



PanoramaSky

UNLIMITED POSSIBILITIES TO DESIGN THE SPACE

Panoramic view of the surrounding, optically enlarged living space and the feeling of connection with nature are just few of many advantages of sliding doors designed on the basis of the PanoramaSky system.

The state-of-the-art, minimalist design of this solution allows for hiding the aluminium frame of the structure in the floor, walls and the ceiling, thus the boundary between the house interior and the outside surrounding is blurred. This effect is enhanced by the threshold-free construction which facilitates moving. The PanoramaSky system allows for designing glazings without aluminium elements being visible from outside. Thus, the effect of almost uniform glass surface is achieved with discrete division lines. What is more, the glass corner allows for connecting glass sheets at any angle.

The feeling of unlimited space is ensured by slightly visible width of the door leaf connection, the smallest size of visible aluminium available at the market as far as movable mullion is concerned, as well as permitted height of the structure up to 13 fts. Despite of large size of designed solutions, the entire structure is light and subtle.

ADVANTAGES OF THE SYSTEM

- 01
Unlimited access to sunlight – transparency up to 98%.
- 02
Structures based on the PanoramaSky system can have the height up to 16 feet.
- 03
A static mullion allows for designing a row of fixed glazing which can be additionally connected at any angle thanks to using an all-glass corner.
- 04
Manual or automatic control. The control mechanism is hidden or assembled at the outside of the construction.
- 05
The possibility of glazing with triple pane units up to 2,36" thick.
- 06
Linear drainage integrated with the frame.
- 07
The PanoramaSky system allows for the replacement of worn guide rolls without the necessity to disassemble heavy door leafs.
- 08
Independent structures of the PanoramaSky system can be connected at 90° angle.
- 09
The possibility of glazing from the outside.
- 10
Patented solution of divided chicane profile ensuring easy assembly and the possibility of the fitting replacement without the necessity of the leaf disassembly.

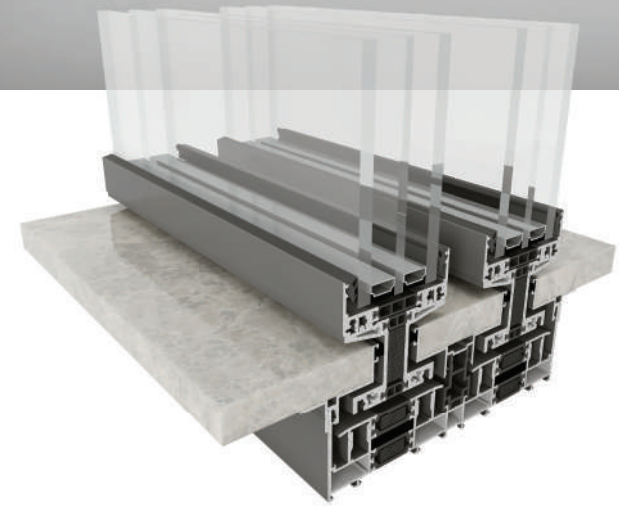




SLOTTED SOLUTION

A REVOLUTIONARY APPROACH TO THE THRESHOLD IN SLIDING DOOR CONSTRUCTION!

The bottom frame and carriage mechanism are recessed into the floor, making them completely invisible. The door user sees only an aesthetically appealing narrow gap of only 1". The solution gives great scope for interior design through the freedom of choice of floor finish. The use of the same material inside and outside the building guarantees the effect of complete blurring of the border between spaces. The solution uses a thermally insulated I-section profile. The slotted construction provides excellent thermal insulation. It is available in all PanoramaSky system variants and schemes.



FIXED WINDOW IN THE PanoramaSky DESIGN

THE PanoramaSky SYSTEM ADDED A SOLUTION FOR THE CONSTRUCTION OF FIXED WINDOWS

The previously used single frame has been modernised by adding a removable fin to facilitate the installation of the glazed unit. This makes it possible to manufacture single-sash fixed windows and corner units consisting of two fixed elements. The solution is compatible with standard door frames without separate fins, which is particularly important for structures that are repeatedly broken at different angles.

ASYMMETRICAL CORNERS

UNLIMITED POSSIBILITIES FOR DOOR FRAMES CONFIGURATION

The new PanoramaSky solution allows different frames to be joined freely and systemically at 90°. This makes it possible to construct fixed and sliding corners with an unequal number of sections on both arms. Joining a single door frame with a double door frame, a double door frame with a triple door frame or multiple door frames, e.g. a four door frame with a double door frame, is no problem at all. The main advantage of the solution is that there is no need for deep fitting where the design does not require it. The depth is perfectly matched to the requirements of the corner construction scheme. In addition, if there is absolutely no need, we do not use deep frames, which reduces costs.



AUTOMATION OF THE PanoramaSky CONTROL PROCESS

Within the MV system, two solutions are available for automating the leaf sliding process:

The PREMIUM solution. The automatics is completely hidden in the PanoramaSky frame, so the user does not see any structural element. With this automatic system the maximum weight of a moving leaf is 2650 lbs. The solution allows the control of leaves in virtually all configurations including corners and multi-leaf arrangements. The automation has a safety function including an overload system that stops the leaf on an obstacle and ensures that the pane can be opened and closed in the event of a temporary power failure. The solution can be controlled by, e.g., remote control, touch screen panel or android.

A surface-mounted solution in which the automation bar is attached to the MV top door frame from the inside. Nevertheless, the solution is characterised by elegance and minimalism. The user sees only a small inspection bar for service access. The maximum weight of the moving leaf is 1550 lbs. The surface-mounted solution is available in two variants: automatic sliding of one leaf or two leaves that slide sideways. It is possible to install the automation on an already installed MV structure.







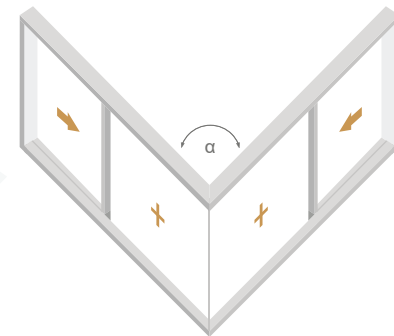
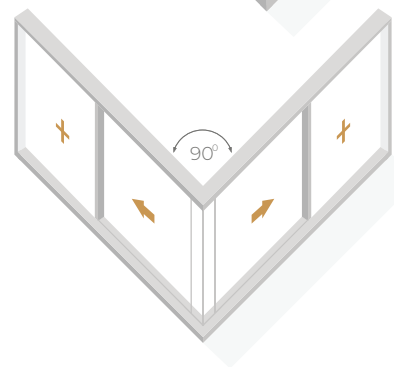
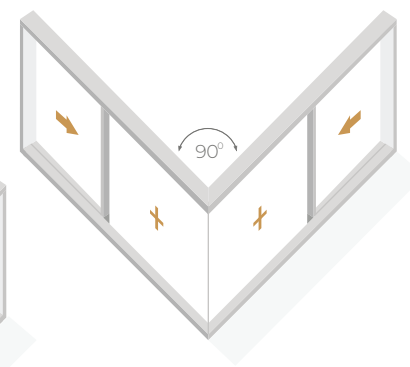
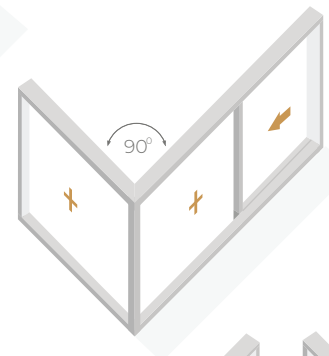
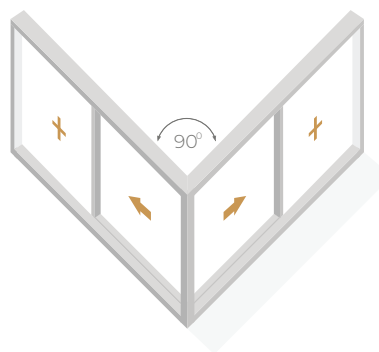
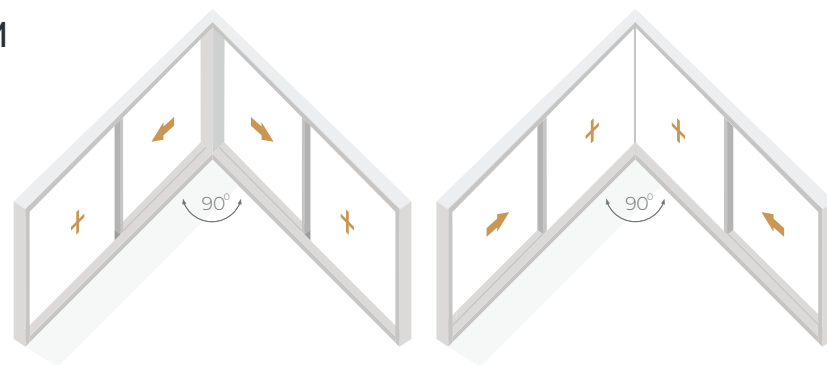
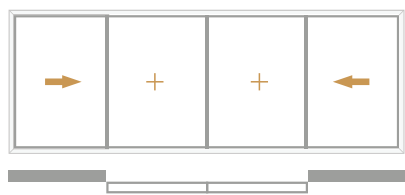
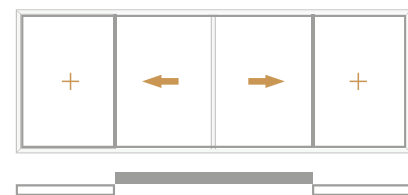
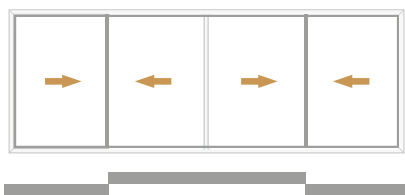
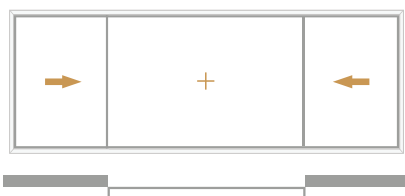
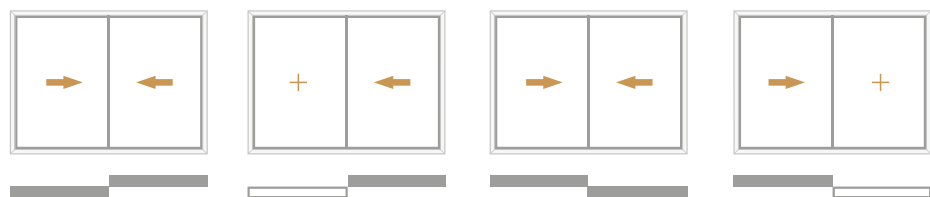
TECHNICAL PARAMETERS

Air permeability	<0,1 cfm / ft2
Water tightness	7,5 psf
Designed pressure	50 psf
Thermal insulation	U from 0,12 Btu/hft2F
Forced entry resistance	class RC2
Acoustic insulation	STC = 42 dB

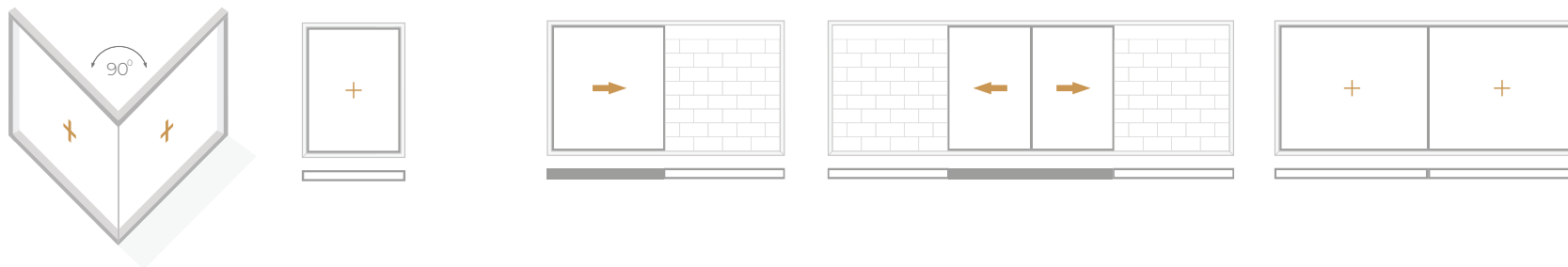
	manually operated sliding leaf	automatically operated sliding leaf	fixed leaf
Max. weight	880 lbs	1100 lbs	1650 lbs
	leaf	double-rail frame	triple-rail frame
Max. weight	2,83 "	7,55 "	11,57 "



CONSTRUCTION POSSIBILITIES OF THE PanoramaSky SYSTEM
IN A DOUBLE-RAIL VERSION



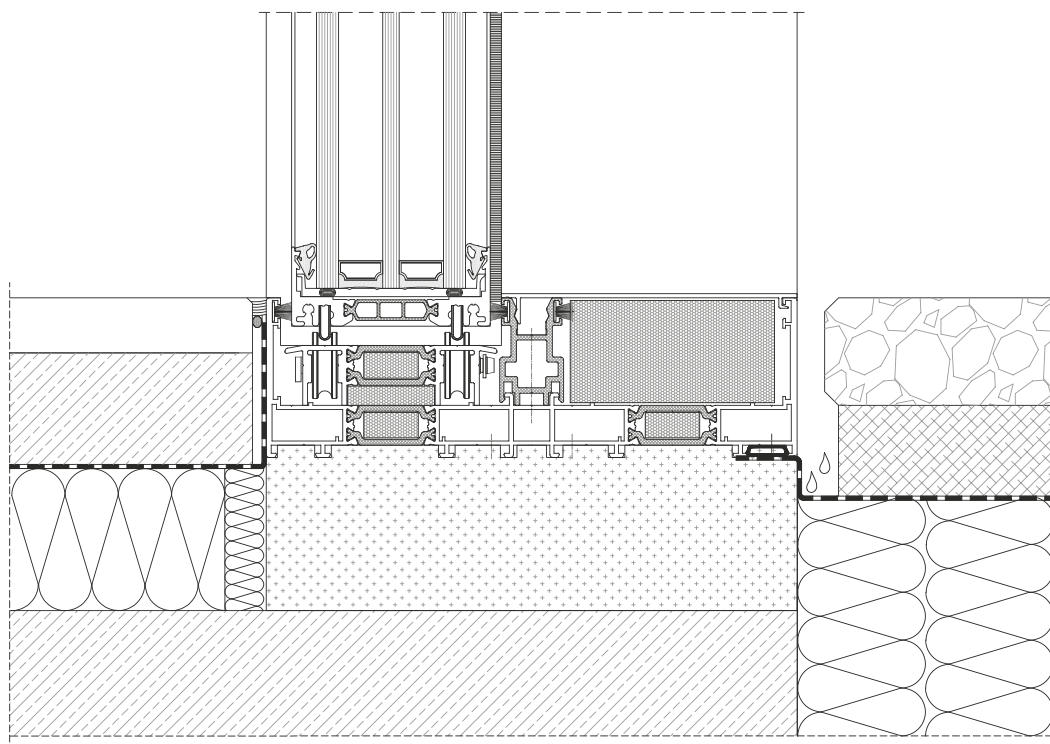
CONSTRUCTION POSSIBILITIES OF THE PanoramaSky SYSTEM IN A SINGLE-RAIL VERSION



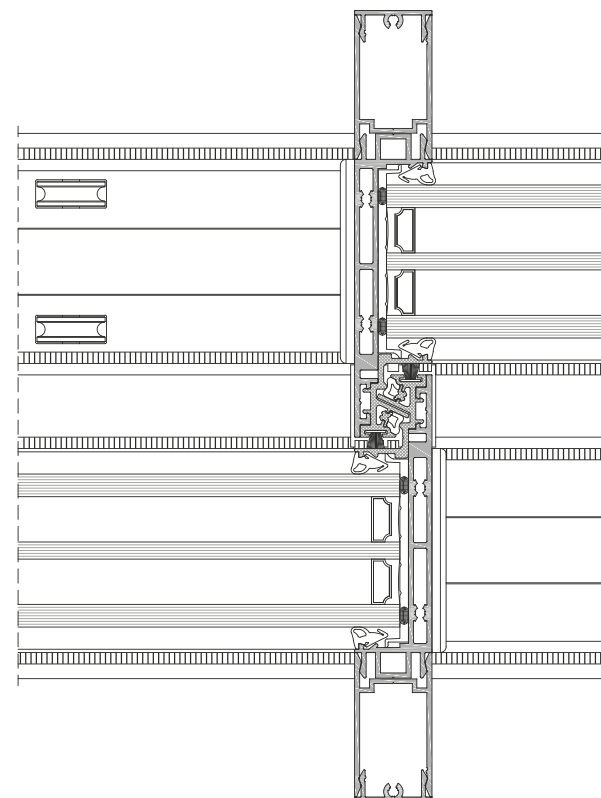
CONSTRUCTION POSSIBILITIES OF THE PanoramaSky SYSTEM IN A TRIPLE-RAIL VERSION



THE PanoramaSky SYSTEM CROSS-SECTIONS

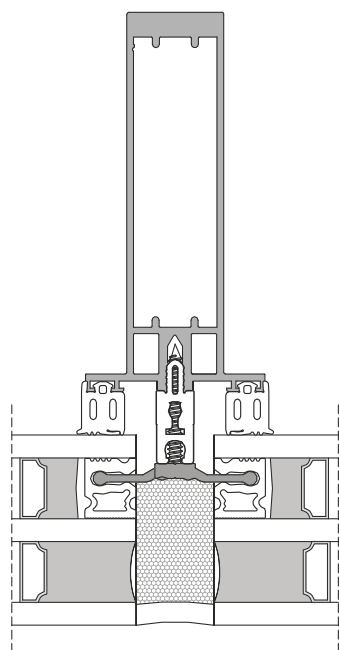


The door cross-section at the floor level

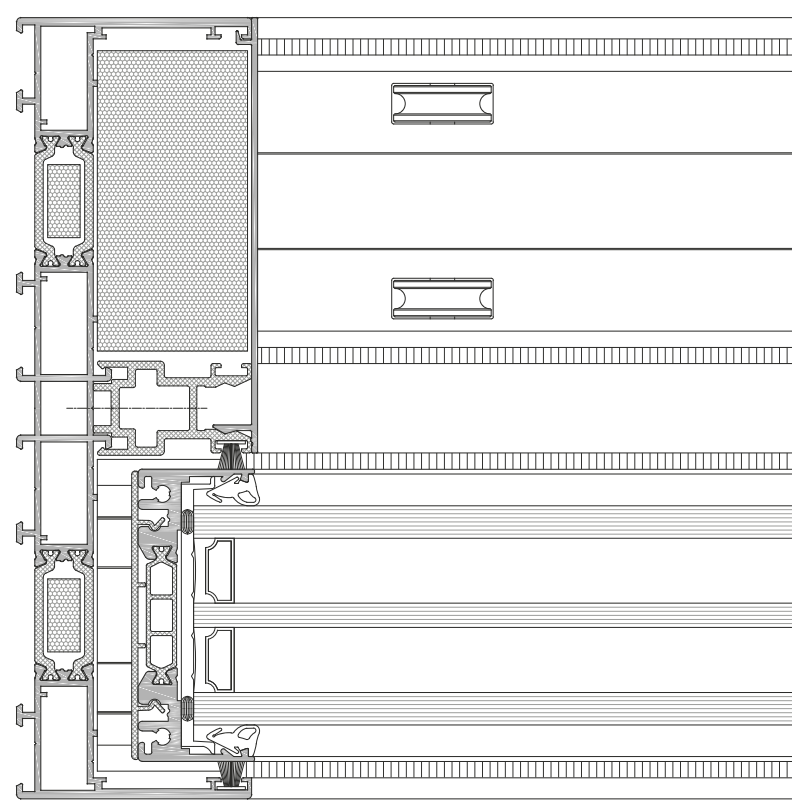


Cross-section through the leaves assembly

THE PanoramaSky SYSTEM CROSS-SECTIONS



The door cross-section at the floor level



Cross-section through the leafs assembly



EXPERIENCE THE DIFFERENCE

CONTACT

USA

BERTRAND Windows and Doors

707 Remington Rd
Unit 9
Schaumburg, IL 60173
United States
bertrand.usa@bertrand.pl
773 998 1444

POLAND HEADQUARTERS

BERTRAND sp. z o.o. sp. k.

Wejherowska 12
84-242 Luzino
Poland
export@bertrand.pl
+48 694 458 428

VISIT US!

windowsbertrand.com
bertrand.pl

